



TravisMathew Coveside Hoodie TM1MZ337



You've entered the ultimate comfort zone-and there's no going back. This incredibly soft, plush knit style is built for layering and it's just what you'd expect from TravisMathew.

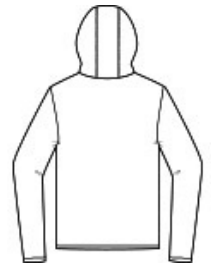
- 6.5-ounce, 72/28 polyester/cotton
- Easy wash and wear
- 4-way stretch
- Wrinkle-resistant
- Three-panel hood with dyed-to-match draw cords
- Front pouch pocket
- TM logo woven label at left hem

CARE INSTRUCTIONS

Machine Wash Cold With Like Colors. Gentle Cycle. Non-Chlorine Bleach. Tumble Dry Low. Remove Promptly. Cool Iron If Needed.



front



back

HOW TO MEASURE



CHEST WIDTH

Measure under the arm and around the fullest part of the chest with arms down, keeping tape horizontal.

SIZE CHART

| | S | M | L | XL | 2XL | 3XL |
|-------|-------|-------|-------|-------|-------|-------|
| Chest | 35-37 | 38-40 | 42-44 | 45-47 | 48-50 | 52-54 |

COLOR INFORMATION

Please note: PMS code information is shown only when an exact match is available.



Black
PMS 426C



Blue Nights
PMS 432C



Dark Grey Heather
PMS 425C